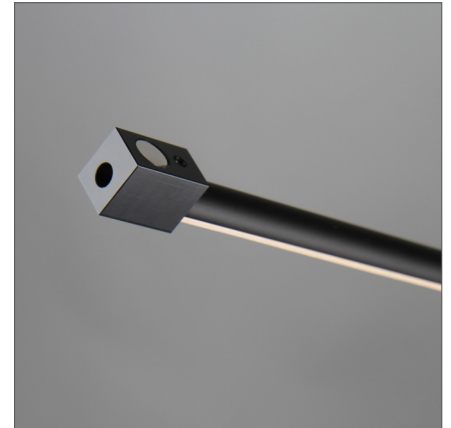


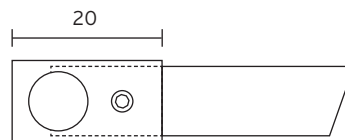
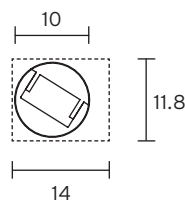
## technical data sheet // LED light bar R1

description:	LED light bar, mountable magnetic, rotatable 360°
housing colour:	aluminium anodised black, silver
LED type:	mid power LED, high CRI
lifetime:	50,000 hours
basis of lifetime:	L70F10
compliant to EMC:	DIN EN 55015:2013
light colour:	~2700 K, ~3000 K, ~4000 K
max. luminous flux:	~900 lm/m
max. power consumption:	~15 W
LED driver:	external
power input:	24V DC constant voltage
dimming:	external
protection class:	IP 20
optic:	linear optics with ~50° or ~70° beam angle

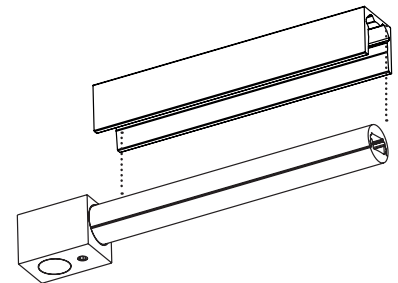


recommended accessory: - power supply with constant voltage 24V DC  
 additional accessory: - anti-glare profile 13.6 x 13.6mm, anodised aluminium  
 or powder-coated according to RAL

### Dimension



length: individual cut  
 from 100mm to 3.000mm



specification in mm

### Test result

for light colour ~3000 K // linear optics ~50° // colour rendering index typ. 97, R9 > 90, R12 > 90 // colour variation ≤ 3 SDCM

