



XICATO is defining the future of smart buildings, delivering the absolute best quality, highest performing and most reliable light sources, as well as other wirelessly connected intelligent devices including drivers, sensors, switches, gateways, controls electronics, and software. Xicato products inspire architects, designers and building owners to dream up and create more beautiful and healthier environments with smarter and more connected experiences.

LIGHT SOURCES



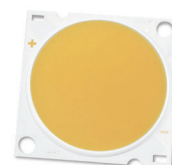
XIM

Fully integrated, intelligent module
Light output 700lm to 3000lm
CCT range 2700K to 4000K
LES options 9mm and 19mm



XTM

Zhaga compatible interface
Light output 700lm to 5000lm
CCT range 2700K to 5600K
LES options 9mm and 19mm



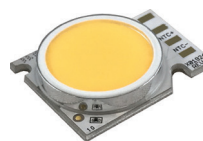
XOB

Industry standard form-factor
Light output 345lm to 8300lm
CCT range 2700K to 5600K
CRI 90 and 95
LES options 4, 6, 9, 14, 23, 32 mm



XLT

Constant voltage linear light source
720 lumens per meter
Efficiency 100 lpw Typ



XCA

Remote phosphor core LED
Light output 700lm to 5000lm
CCT range 2700K to 5600K
LES options 9mm and 19mm

CONTROLS



XIS

Compact wireless nodes that transmit sensor data over the Bluetooth® network
Wired or battery powered
Sense PIR motion, lux, temperature and relative humidity
White or black options



XSW

Convert standard momentary contact or 0-10V dimmers into powerful programmable Bluetooth enabled lighting controllers
Field installable
Powered by 15-48V DC
Button or standard rocker-plus slider options



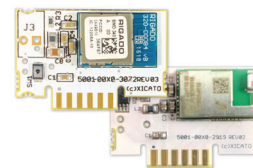
XIG

Extend the Bluetooth network beyond the range of a Bluetooth radio
Remote access for programming, monitoring and control of large building
Open secure API enables monitoring and control by 3rd party systems



XRN

Compact DC powered wireless Bluetooth nodes to extend your Bluetooth network
Can be used as a standalone DC-powered iBeacon, Eddystone or Alt Beacon
White or black options



XGC

PCB card enables third-party manufacturers to add Xicato Controls compatibility to their product lines
Factory programmed with a universal software image that works with a wide variety of device types

DRIVERS



XID

Forward voltages of 2.5 to 45V
Programmable current output from 175mA to 1400mA
Smooth, flicker-free dimming to 0.1%.
Over-the-air (OTA) programmability
Available with or without Bluetooth



XMD

48V DC input and programmable constant current output
Smooth, flicker-free dimming to 0.1%.
Supports for a 100k Ohm POT for trim control
Over-the-air (OTA) programmability
Available with or without Bluetooth

SOFTWARE



XICATO APPS

Gain mobile lighting control and operational monitoring
Xicato app is available on Apple iTunes App Store
Xicato Xtouch Android app is available on the Google Play store



XICATO CONTROL PANEL

Configure, control and monitor Xicato Controls
Security management. Flexible groups and scenes
Scheduling and sensor response programming
Program and manage multiple Beacons
Available for Windows or MacOS