

Linear remote phosphor LED strip light designed for cove lighting or under cabinet lighting

LIGHT OUTPUT

CCT/LED Colour (K)	2700
CRI	80
Luminaire Lumens	N/A
Optical Data/Beam Angle (°)	Diffused
LED Binning	3 SDCM

ELECTRICAL

Watts per metre (W/m)	10
Input Voltage	24 V DC
Connection Type	Wago Cable and Push Pin
Maximum Chain Length (mm)	4800
Approx. Power Consumption (W)	3
Dimmable	Yes
Max Luminaire Length (mm)	1188

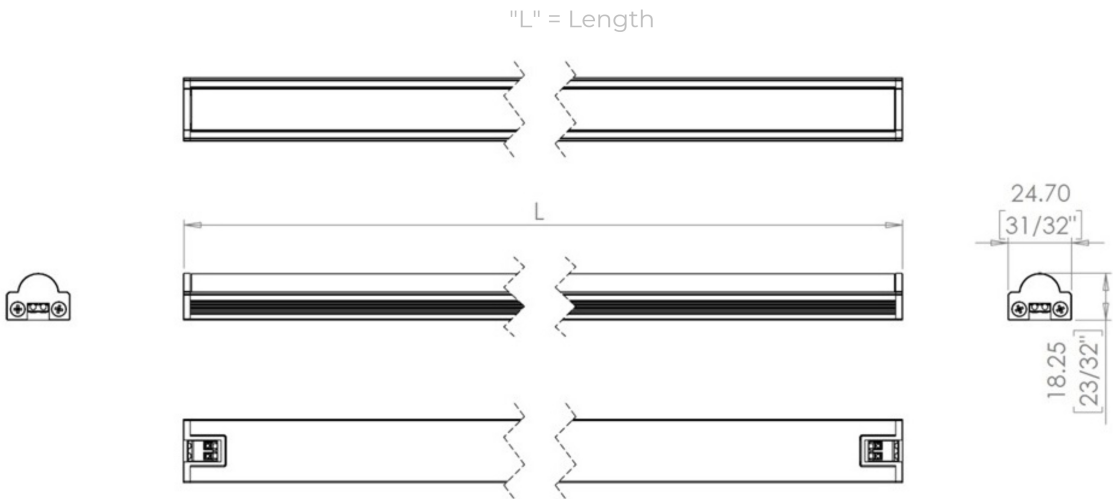
PHYSICAL & ENVIRONMENTAL

Finish	Silver Body
Length (mm)	150
Ambient Storage Temperature (°C)	-30 to +85
Ambient Operating Temperature (°C)	-10 to +40
IP Rating	IP20
IK Rating	03
LED Pitch (mm)	12.3
Cable Exit/Entry	Bottom Exit
Weight (g)	N/A

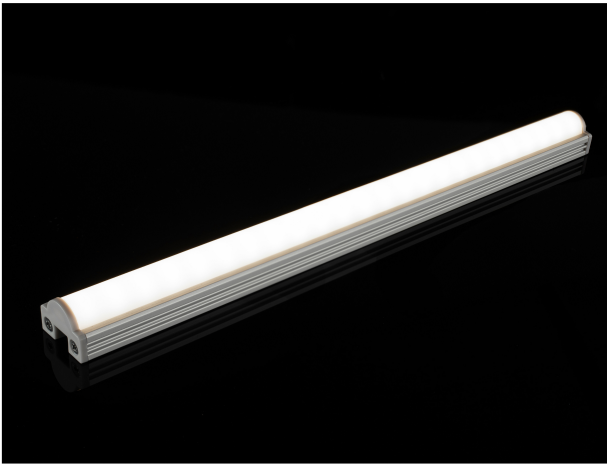
PRODUCT FEATURES

- End to end connections
  - Avaialbel in 5 watts per 300mm/ft
  - Simple H Pin connectors
- White LED Diffuser
  - Plug and play connectivity without polarity sensitivity
  - Fixing clip option for flat or 45° tilt
- Radial light beam pattern
  - poke-in wire connections with option for h-pin to connect between products not polarity sensitive

DIMENSIONS



PART NUMBER: VEX-DOMELINE-EC - 2700K - 150 - 10W - IP20 - DIF



SPECIFICATION TEXT

Domeline-EC offers a radial wide beam light output, produced using single colour low diffuser. This is the lower power entry level option to Domeline product range. Simple plug and play connections with integrated bridge rectification, allowing end to end connections omitting polarity sensitivity.

Provided data are typical values. Due to tolerances of the production process, figures for light output, electrical data etc can vary up to 10%. The Tc-point must be measured in thermal equilibrium in accordance with IEC EN 60598-1.