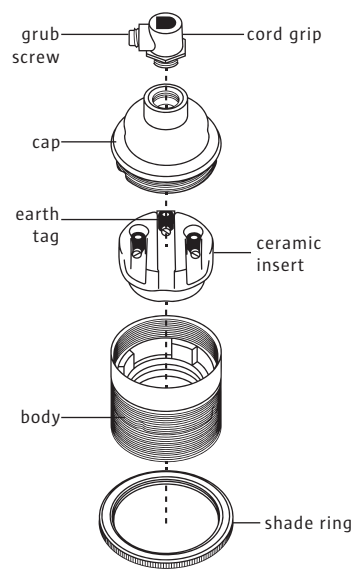


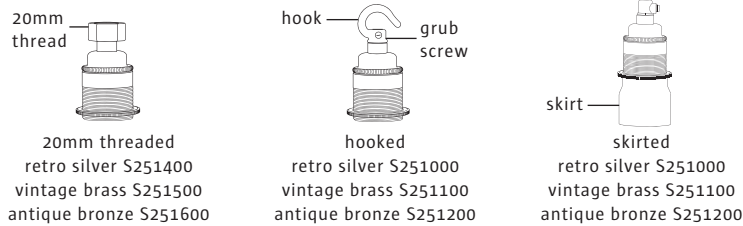
FACTORYLUX[®]

METAL E27



cord grip | retro silver S250300
vintage brass S250400 | antique bronze S250500

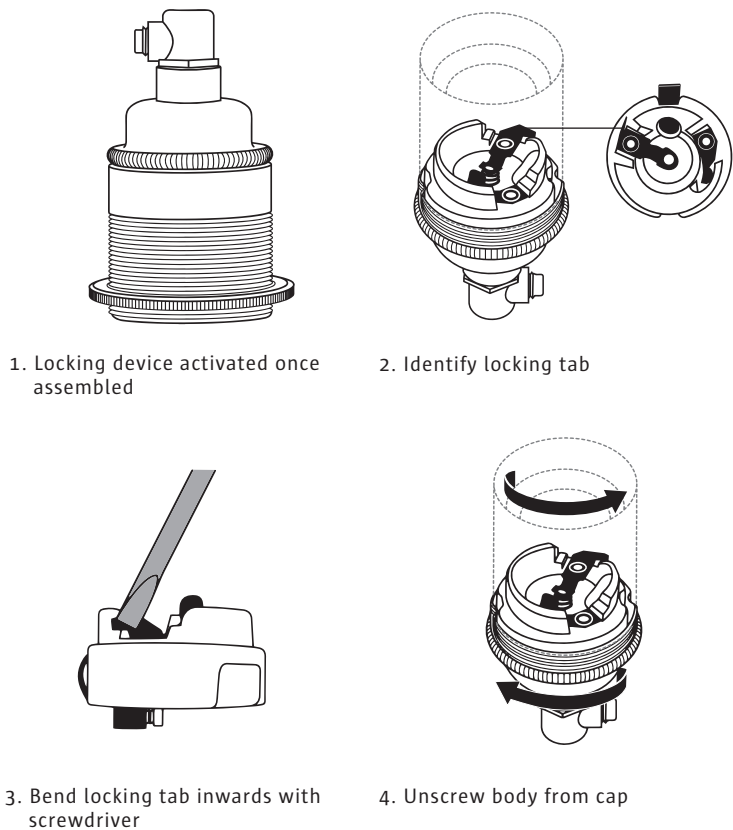
VARIANTS



FACTORYLUX[®]

USER INSTRUCTIONS

UNLOCKING



YOUR PRODUCT

Thank you for purchasing this Factorylux product. It has been designed and made in the UK to give you many years of reliable service. Please read these user instructions carefully. All user instructions available to download at factorylux.com

WARNING

- Installation in accordance with current wiring and building regs and by a competent person only. Find an NICEIC registered contractor at factorylux.com
- For indoor use only
- Earthed - only compatible with 3 core lighting cable
- Shut off power to the circuit before installation
- Ensure cables are secured in correct terminals (see 'wiring diagram')
- Ensure flexible cables are secure - terminals must be relieved from strain and twisting
- Ensure earth tag is aligned with notches on cap
- Bathroom installation by authorised contractor only
- Do not exceed max operating temperature - 170°C
- Maintain safe distance between light source and surfaces

HANDLING & CLEANING

- WARNING:** Shut off power and allow to cool
- Wipe gently with a dry, soft, cotton cloth
 - Cleaning products, scratching, abrasion, damp, oils, liquids etc may have a detrimental effect on surface patina

TROUBLESHOOTING

No user serviceable parts. In the event of failure, fault or damage shut off power and contact our technical department via factorylux.com

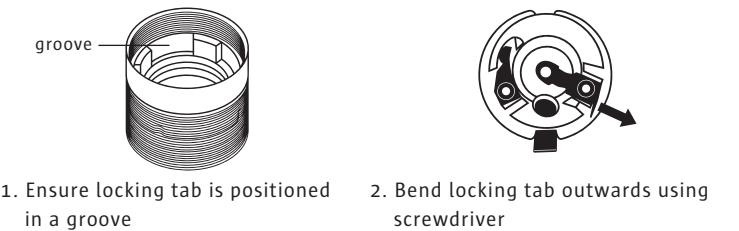
STAY UP TO DATE

We post regular design and product information via social media and our blog. You can also contact us via instant support, twitter or email hello@factorylux.com



LOCKING

CAUTION: After terminating and assembling your bulb holder, the locking mechanism may need re-activating:



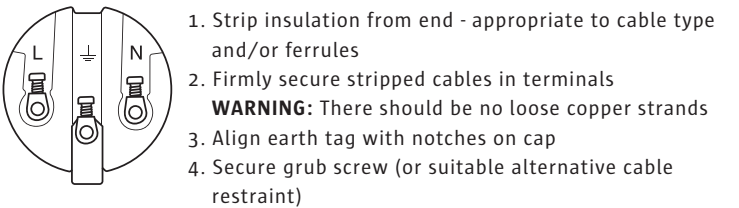
TOOLS REQUIRED

- | | |
|------------------------|---------------------------|
| • Cord grip grub screw | 4mm flat head screwdriver |
| • Hooked grub screw | 3mm flat head screwdriver |
| • Terminals | 3mm flat head screwdriver |

INSTALLATION NOTES

- We recommend using ferrules with crimping pliers to crimp exposed stranded conductors. It's simpler, neater and safer

WIRING DIAGRAM



Designed, made & tested in the UK to BS EN 60238
Revision 1603