

4

3

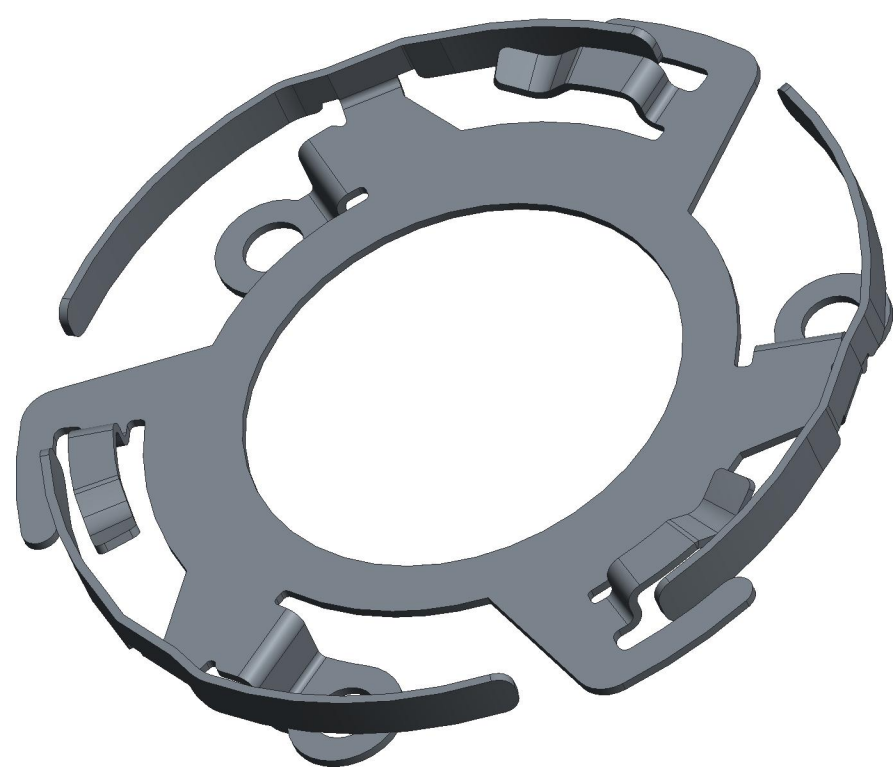
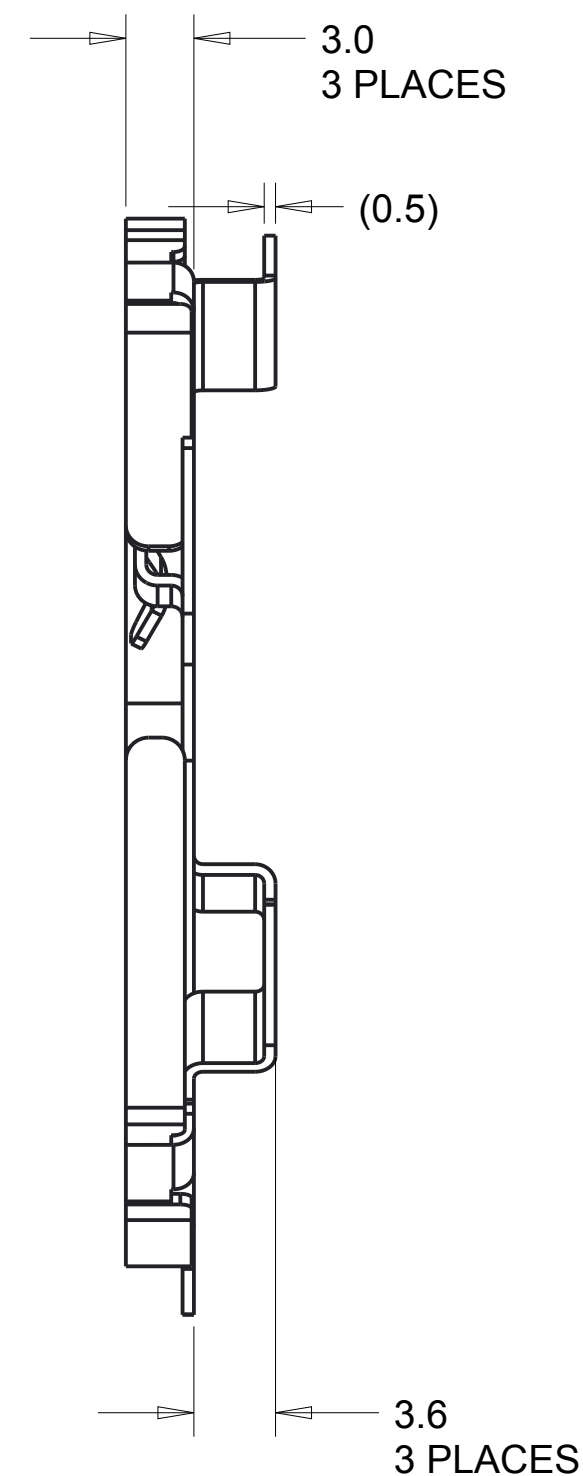
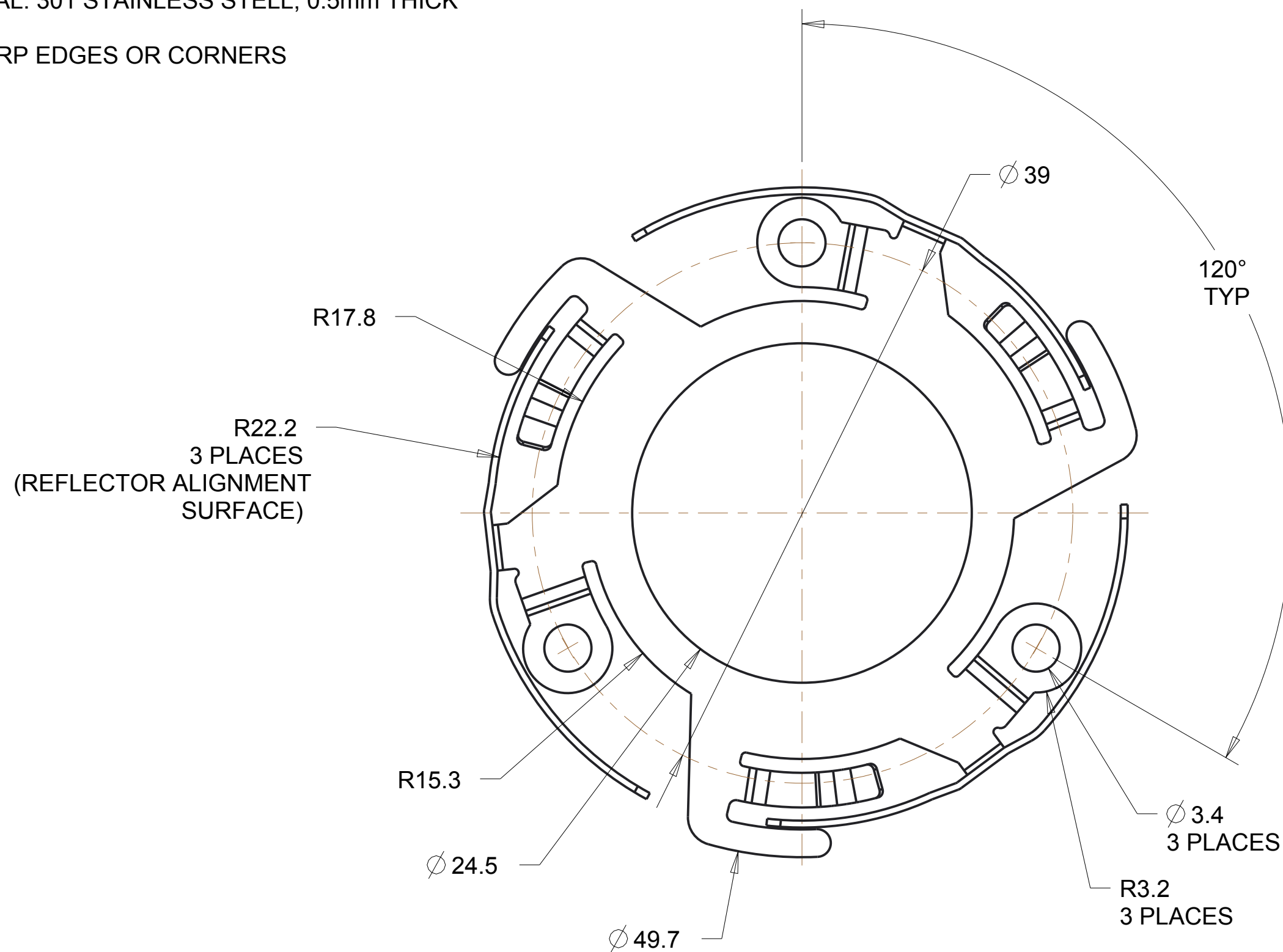
2

1

NOTES- UNLESS OTHERWISE SPECIFIED:

- 1. CAD MODEL SERVES AS PRIMARY REFERENCE TO PART GEOMETRY
- 2. MATERIAL: 301 STAINLESS STEEL, 0.5mm THICK
- 3. NO SHARP EDGES OR CORNERS

ZONE	REV	DESCRIPTION	ECN	DATE	APVD
	1	RELEASED		20140923	



**-CONFIDENTIAL-**

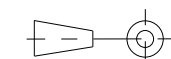
THIS DOCUMENT IS AND CONTAINS CONFIDENTIAL AND TRADE SECRET INFORMATION OF XICATO INC.

THIS DOCUMENT IS LOANED FOR LIMITED PURPOSES ONLY AND REMAINS THE PROPERTY OF XICATO INC. IT IS TO BE RETURNED UPON REQUEST AND IN ALL EVENTS UPON COMPLETION OF PURPOSE OF THE LOAN.

NEITHER IT NOR THE INFORMATION IT CONTAINS MAY BE REPRODUCED, USED, OR DISCLOSED TO PERSONS NOT HAVING A NEED TO KNOW CONSISTENT WITH THE PURPOSE OF THE LOAN WITHOUT WRITTEN CONSENT OF XICATO INC.

UNLESS OTHERWISE SPECIFIED, DIMENSIONS ARE IN MILLIMETERS. STANDARD TOLERANCES ARE:

- 0-10± 0.1
- 10-50± 0.15
- 50-100± 0.20
- 100+± 0.25
- ANGLES ± 0.5°



DATE:	20140609
DSR:	
REL.:	
PROD.:	
ENGR.:	JSY
CHKD.:	
CHKD.:	JSY

XICATO INC		
TITLE ADAPTER, OPTIC, 3-HOLE		
DWG SIZE C	PART NUMBER XSA-244	REV. 1
SCALE: 1.000		SHEET 1 OF 1

4

3

2

1