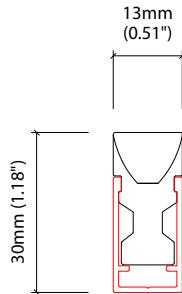
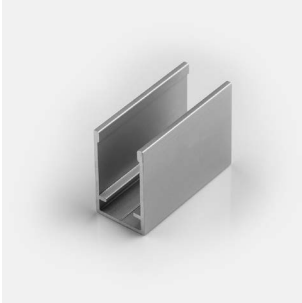


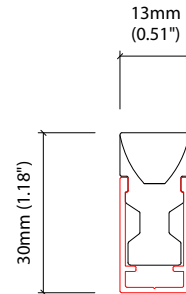


**MOUNTING OPTIONS**

---



**KKCP-18**  
Mounting clip



**KKCH-02**  
Mounting channel

**CONNECTORS**

---



**KKCP-27**  
Male Lead Connector 1000mm (39.37in)



**KKCP-28**  
Female Lead Connector 1000mm (39.37in)

### KKDC CONTROL



IP67  
100W 24V  
Aluminium housing  
L248/W73/H48mm  
(L9.76/W2.87/H1.89in)

#### KKPS-01 1-10V PSU\*

visDIM dimmable power supply (See Control Gear)

\* Not suitable for use with RGB/LEDmix



IP67  
100W 24V  
Aluminium housing  
L248/W73/H48mm  
(L9.76/W2.87/H1.89in)

#### KKPS-02 DMX PSU

visDIM dimmable power supply (See Control Gear)



IP67  
100W 24V  
Aluminium housing  
L248/W73/H48mm  
(L9.76/W2.87/H1.89in)

#### KKPS-03 DALI PSU

visDIM dimmable power supply (See Control Gear)



IP20  
Black plastic housing  
L164/W64/H34mm  
(L6.46/W2.52/H1.34in)

#### KKDM-05 1-10V

visDIM dimmable sub-controllers (See Control Gear)



IP20  
Black plastic housing  
L164/W64/H34mm  
(L6.46/W2.52/H1.34in)

#### KKSC-03A DMX (Screw terminal)

visDIM dimmable sub-controllers (See Control Gear)



IP20  
Black plastic housing  
L164/W64/H34mm  
(L6.46/W2.52/H1.34in)

#### KKSC-03B DMX (RJ45)

visDIM dimmable sub-controllers (See Control Gear)



IP20  
Black plastic housing  
L164/W64/H34mm  
(L6.46/W2.52/H1.34in)

#### KKDL-01 DALI

visDIM dimmable sub-controllers (See Control Gear)