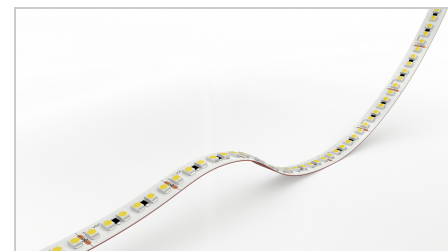


IP20/54	IP67/68	POWER SUPPLIES	CABLES	PROFILES	CONNECTORS	PCB COLOUR	14.53 W/m
1004.9 Lm/m	CE	ROHS COMPLIANT					

PRODUCT SPECIFICATION

Dimension	L5000/W8mm
PCB increment	Power connection and cut point every 33.33mm
LED pitch	5.60mm
Chip	Epistar
Beam angle	120°
Colours	White
Bin/step	3 Step MacAdam ellipse
CRI	95.6
Lifetime	50000hrs@45°
Operating temp.	0 - 50°C
IP rating	IP20/54/67/68
Mounting	3M VHB backing tape
Minimum bend radius	10mm
Connection	Hardwire tails or male/female connectors
Control	0-10V/1-10V/DMX/DALI

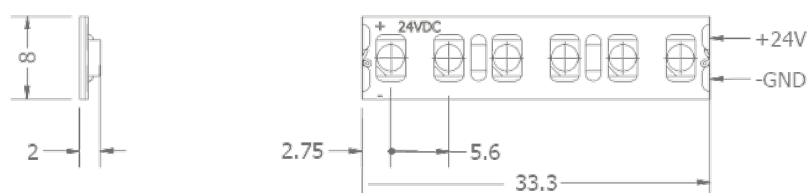


PERFORMANCE DATA (for 1000mm)

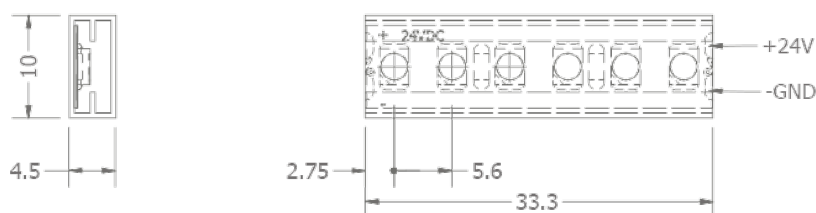
Power consumption	14.53W
Supply voltage	24V DC
Supply current	0.605A
Luminous flux	1004.9Lm/M

TECHNICAL DRAWING

IP 20/54



IP 67/68



■ PRODUCT DETAILS

Product name	ECO FLEX 180
Stated output	1004.9lm per metre
Description	Flexible LED Tape, 6000K, 24V, 14.53W/m
Quantity/length of product tested	1 x 1000mm
Bin tolerance/#. MacAdams ellipse of chip	3 Step MacAdam ellipse

■ ELECTRICAL CHARACTERISTICS

Input Voltage (V DC)	24
Input power (WDC)	14.53
Input Current (mA DC)	605mA

■ LIGHT OUTPUT

Total light output (Lumens)	1004.9
Luminaire efficacy (lm/W)	69.16
Beam angle	120°

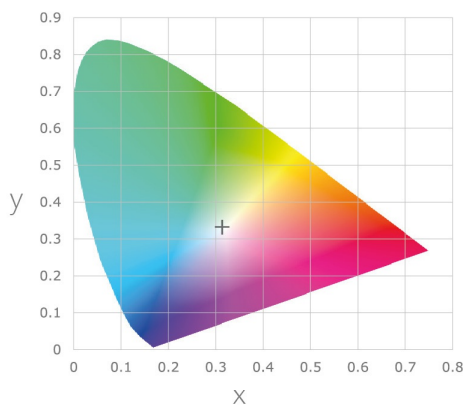
■ COLOUR CHARACTERISTICS

Correlated colour temperature (CCT)	6206K
Colour rendering index (CRI, Ra)	95.6
Chromaticity coordinates (CIE 1931 - x,y)	0.3182, 0.3304

COLOUR RENDERING INDEX

R1	R2	R3	R4	R5	R6	R7	R8	R9	R10	R11	R12	R13	R14	R15
97	99	97	93	94	94	96	95	97	96	94	69	99	98	95

CHROMATICITY DIAGRAM



SPECTRAL RADIANT FLUX VERSUS WAVELENGTH

