

VEX-MIDILINE-TIR

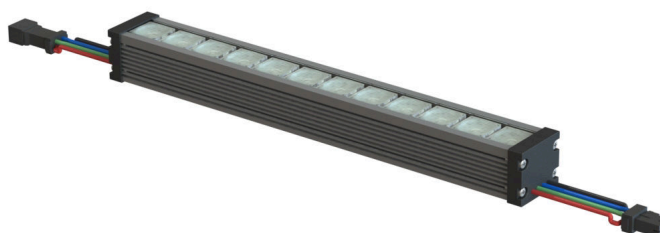
VEXICA

PROJECT

TYPE

QUANTITY

LOCATION



Luminaire:

Materials: Anodised Aluminium

Finish: Silver Body with Black End Caps

Profile Dimensions: 32 x 36.8mm

Lengths: 320mm to 1520mm

Accessories: Mounting Brackets

Formats: 2000K, 2500K, 2700K, 3000K, 3500K, 4000K, 5000K

Lens: UV Stable Acrylic/PU Resin

Cable Entry: 100mm from End, Male to Female IP67 Connector

Binning: 3 SDCM

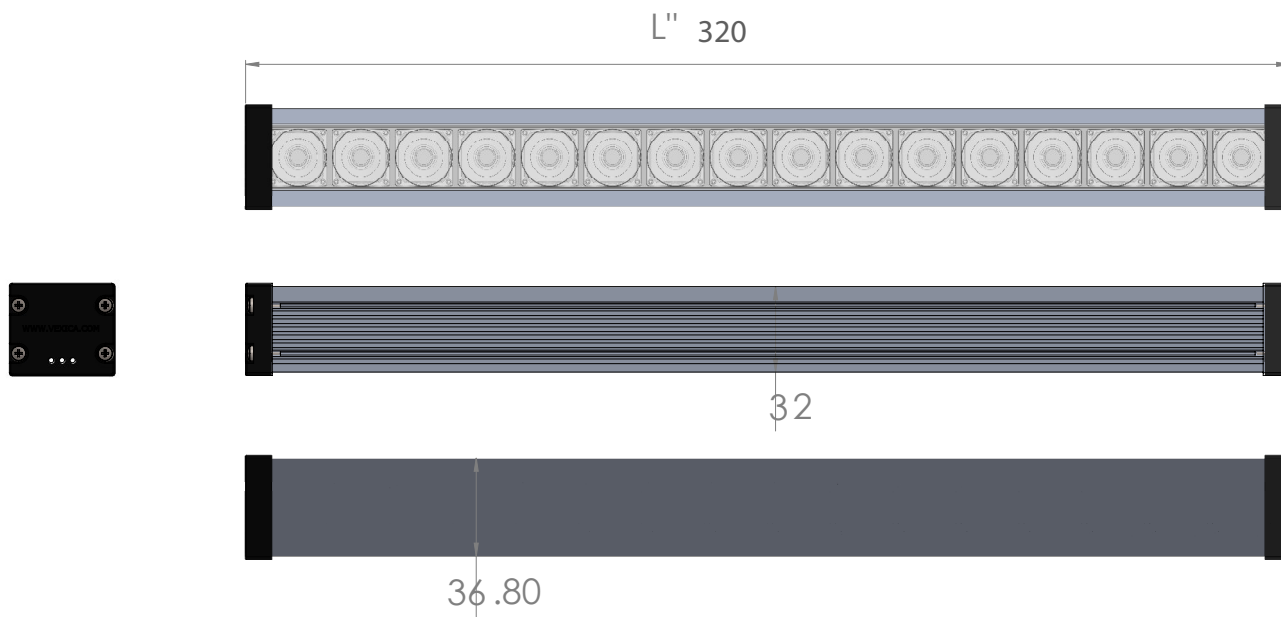
Accessories: 2M Input Cable and Terminator

10M Input Cable and Terminator

Technical

Wattage	24 Watts per 1000mm	Actual Power consumption (W)	7.68
Driver Type Remote	Constant voltage 24 VDC	Luminaire Lumens	400
Driver options	SWITCHED	Source Lumens (per DC watt)	65
Connections ical Data	Hard Wired	Operating Temperature (°C)	-10 to + 40
CRI (Minimum)	80	CCT (K)	2000
Number of LEDs	12 per 320mm	LED Pitch (mm)	25
Beam Angle (°)	8 x 25	Listings	CE
IP rating	IP20	Weight (g)	106 per 300mm
Dimensions (mm)	32 x 36.8mm L: 320mm		

Dimensions



Product order code

VEX - MIDILINE - TIR - 320 - 2000 - IP20 - SWITCHED