

DOMINO W

Robust and Scalable Product Family

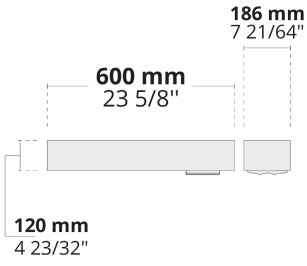


Strong characteristics, flexible optics, and modular structure make DOMINO W stand out for wall-mounted site lighting applications.

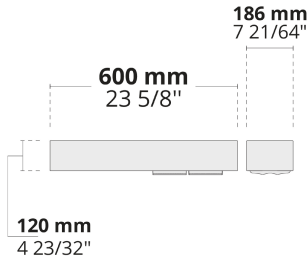
- Equipped with HEPER's patented Milestone EVO (ML EVO) or AreaFlex (AFX) module
- Minimized glare with hidden light source (ML EVO)
- Flexible optics give the ability to provide various light distributions in different output levels (AFX)
- Indirect lighting with reflector technology (ML EVO)
- Easy installation and maintenance with modular structure

Product code	Product name	Light distribution	Delivered lumens flux	Rated input power	Colour temperature	Control	Weight
LW7031.681-EN	DOMINO W ML EVO 1 Module	[T2] 130x85°	2909 - 3678 lm	35 W	2700 K CRI 80, 3000 K CRI 80, 4000 K CRI 70, 4000 K CRI 80	On/Off, DALI, AutoDIM, StepDIM	5.2 kg
LW7031.682-EN	DOMINO W ML EVO 2 Module	[T2] 130x85°	5819 - 7357 lm	70 W	2700 K CRI 80, 3000 K CRI 80, 4000 K CRI 70, 4000 K CRI 80	On/Off, DALI, AutoDIM, StepDIM	8.15 kg
LW7031.861-EN	DOMINO W AFX 1 Module	[P4] 20x78°, [T1] 111x48°, [T2] 133x48°, [T2-2] 149x54°, [T3] 143x63°, [T4] 117x64°, [T5] 117°	1975 - 4540 lm	18 - 35 W	2700 K CRI 80, 3000 K CRI 80, 4000 K CRI 70, 4000 K CRI 80	On/Off, DALI, AutoDIM, StepDIM	5.0 kg
LW7031.862-EN	DOMINO W AFX 2 Module	[P4] 20x78°, [T1] 111x48°, [T2] 133x48°, [T2-2] 149x54°, [T3] 143x63°, [T4] 117x64°, [T5] 117°	3785 - 9085 lm	34 - 67 W	2700 K CRI 80, 3000 K CRI 80, 4000 K CRI 70, 4000 K CRI 80	On/Off, DALI, AutoDIM, StepDIM	7.75 kg

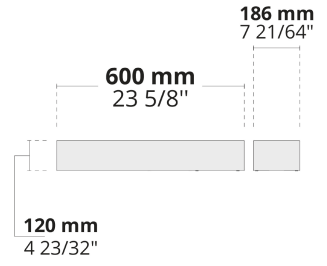
LW7031.681



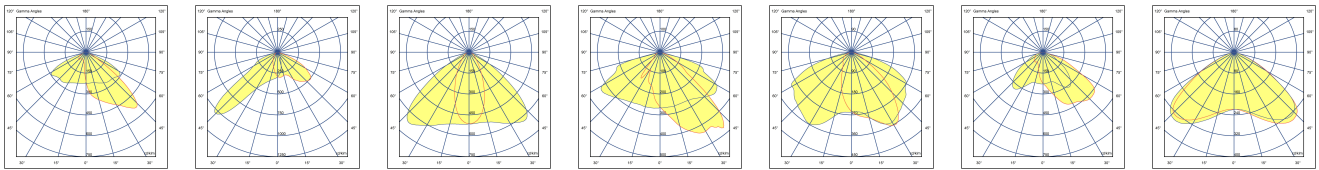
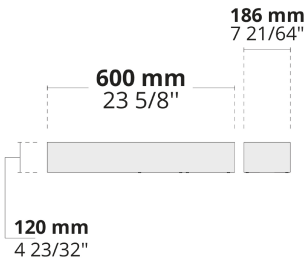
LW7031.682



LW7031.861



LW7031.862



[T2]

Type II,
Asymmetric,
Side throw

[P4]

Special
pedestrian road
distribution-right
side traffic

[T1]

Type I,
Asymmetric,
Side throw

[T2-2]

Type II,
Asymmetric,
Side throw

[T3]

Type III,
Asymmetric,
Side throw

[T4]

Type IV,
Asymmetric,
Forward throw

[T5]

Type V,
Symmetric

Extras

Consult the factory

Luminaire body options

120-277V
50/60Hz

UNI

120-277V 50/60Hz

DPC

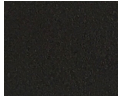
DPC

Double powder
coating

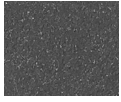
HPR Pazarlama A.Ş.
Başkent OSB 22. Cd. No: 2, Malıköy, Temelli,
Sincan, 06909 Ankara, Turkey
+90 312 267 54 30
info@hepergroup.com

HEPER Europe GmbH
Ahornweg 5a, 58675
Hemer, Germany
+49 237 2901 2975
infoEU@hepergroup.com

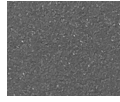
We reserve the right to change specifications
without prior written notice. Edition: 26.01.2024.
For current version visit heperlighting.com. All
flux ($\pm 7\%$ tolerance) and power values ($\pm 10\%$
tolerance) are derived following appropriate IES,
CIE, and applicable standards.



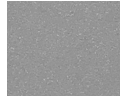
[HM1]
Black



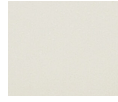
[HM2]
Dark grey



[HM3]
Anthracite
grey



[HM4]
Light grey



[HM5]
White



[HM6]
Bronze



[CC]
Custom
colour
(Please
specify RAL
code)