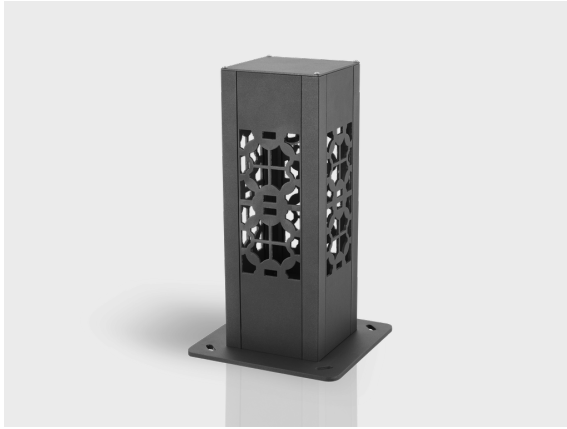


# LIA

A Special Bollard with Unique Reflections

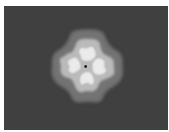
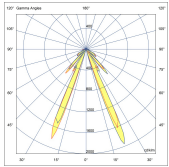
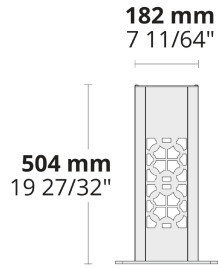
CE UK CA IK08 IP66 



Square form factor, distinctive light effects, and a sturdy body make LIA stand out to illuminate pathways, landscaped areas, and other public spaces.

- Equipped with high-efficiency and long-lasting LED light source
- LED lighting solution with traditional appearance
- Optimized symmetrical uniform light distribution with a unique effect
- Minimalistic design to blend in with different types of architecture
- Sophisticated and decorative pattern on 4 sides
- Easy installation and maintenance

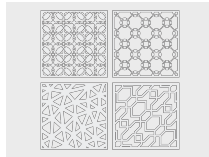
Product code	Product name	Light distribution	Delivered lumens flux	Rated input power	Colour temperature	Control	Weight
LB6059.599-EN	LIA	[SYM-4L] 50°,	256 - 582 lm	14 - 29 W	2700 K CRI 80, 3000 K CRI 80, 4000 K CRI 70, 4000 K CRI 80	On/Off	6.84 kg



**[SYM-4L]**  
Symmetric,  
Special effect: 4  
lines

## Extras

Consult the factory



**CP**  
Custom pattern

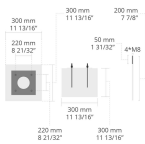
Luminaire body options



**DPC**  
Double powder  
coating

## Accessories (To be ordered separately)

Anchorage



**628I003**  
628I003

