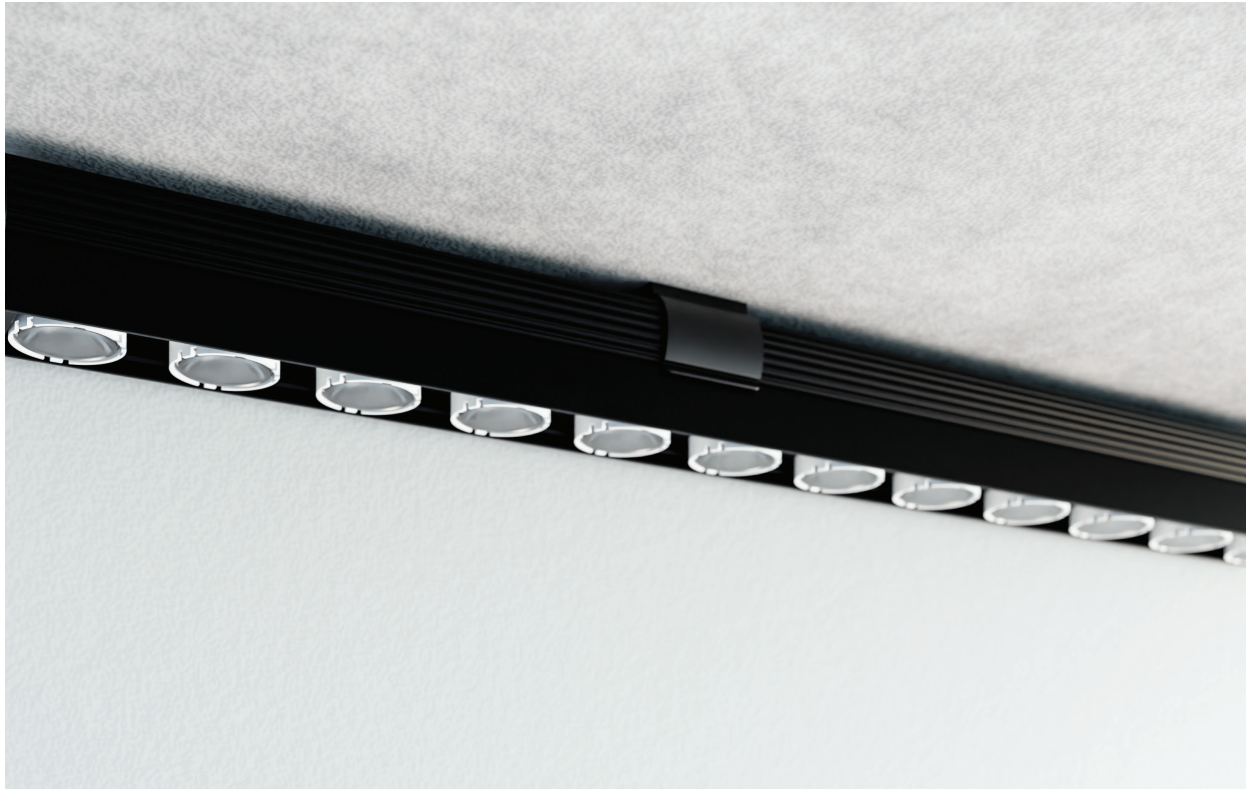


Cobra Infinito

Designed by Ponctuelle



Body

Surface-mounted LED system in extruded aluminum. Available in different length configurations starting from 120mm with an increment of 120mm.

Section 28.5x30mm. Constant 30mm pitch between the LED.

Mounting options:
U mounting clips.

Plastic free packaging.

Accessories

Mounting accessories included.
Honeycomb Art. 2F76, Louvre Art 2F74 to be ordered separately.
Power extension cable Art. 2E46 to be ordered separately.

Finish

Anodized black, white, brass polished, or gold finish. Other finish options are available on request.

LED sources

Power LED. CRI: 90 | R9: >50
CCT: 2700K, 3000K, 3500K, 4000K.
3-Step MacAdam.
Other CRI and CCT options are available on request.

Optic

Lens.
Beam angle: 10° / 17° / 29° / elliptical (15° x 50°).
Wallwasher optics.


Driver

Each Cobra fixture comes with dimmable integrated 48V DCDC driver. Works with integrated power supply positioned remotely.
Power Supply not included, to be ordered separately.

Applications

Ideal for indirect cove illumination, it creates a wall grazing effect for columns and architectonic surfaces. Its flexible structure maintains a constant pitch between LED, ensuring continuous illumination without any shadows or dark areas. Application areas: Cove light, wallwash, residential, hospitality, restaurants, and museums.

Related Products

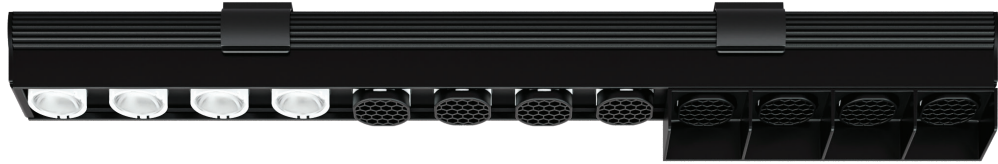
**Cobra
Infinito Flex** 

**Cobra
Linealuce** 

**Cobra
Flex** 

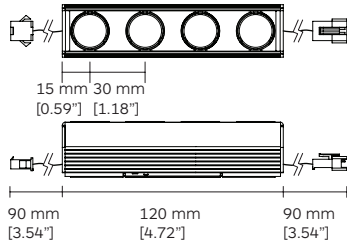
**Cobra Flex
Chain** 

Cobra Infinito | G486



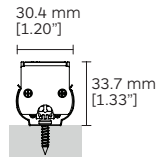
Cobra Infinito

Min. L= 120mm (4 x LED)



Mounting options

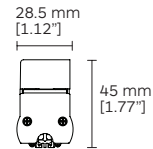
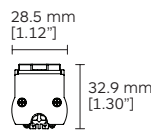
With mounting U clip



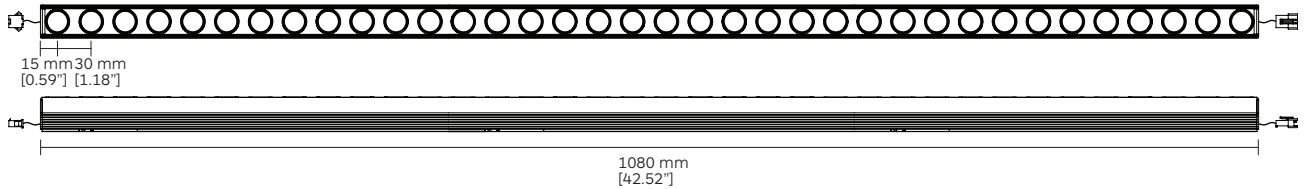
Accessories

Honeycomb Art. 2F76

Louvre Art 2F74



Max. L= 1080mm (36 x LED)



Available length codes ¹

No. of LEDs	LED Power	Length code	Length in mm	Length in inches	Nominal Lumen	No. of LEDs	LED Power	Length code	Length in mm	Length in inches	Nominal Lumen
4	5.8W	0120	120	4.72	708 lm	24	34.8W	0720	720	28.34	4248 lm
8	11.6W	0240	240	9.44	1416 lm	28	40.6W	0840	840	33.04	4956 lm
12	17.4W	0360	360	14.17	2124 lm	32	46.4W	0960	960	37.79	5664 lm
16	23.2W	0480	480	18.89	2832 lm	36	52.2W	1080	1080	42.52	6372 lm
20	29W	0600	600	23.62	3540 lm						

Code ordering example: **G 4 8 6 0 1 2 0 . 9 0 2 7 1 0 4 D 1 0**

	Product code*	Length code	>CRI	CCT**	LED Power	Nominal Lumen	Beam angle (BA°)	Driver Options	Finish
Cobra Infinito	G486	Min. 0120	90	27 2700K	1.45W/LED	177lm/LED	10 / 17 / 29 /	4D 48VDC	10 ■ Black
Min & Max. Length		⋮		30 3000K			EL / WW	dimmable	11 □ White
		Max. 1080		35 3500K					28 ■ Brass Polished
				40 4000K					35 ■ Gold

Notes:

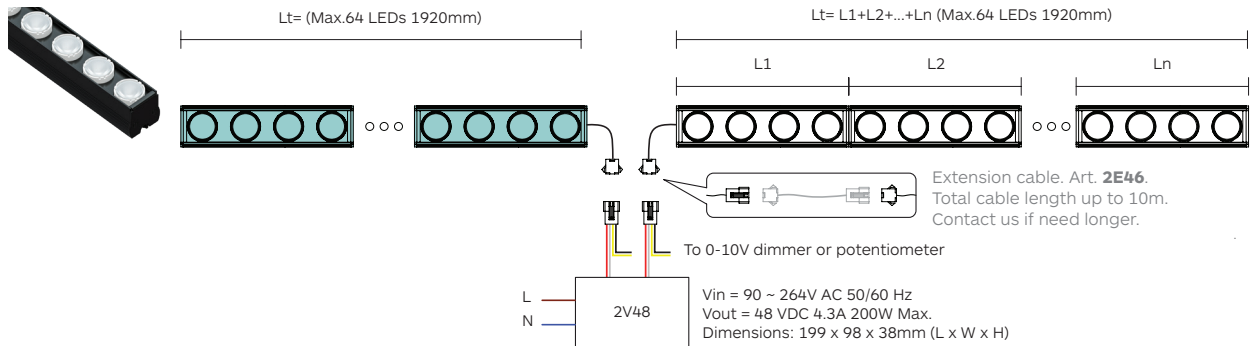
¹ Information in the chart above is related to 3000K LED.

Driver Options

Constant Voltage

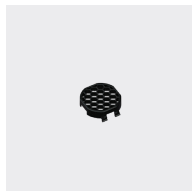
Cobra Infinito

2V48 Constant Voltage Driver. 1 Driver have 2 outlets, 1 outlet can drive 4-64LEDs, about 1920mm Max.



G486

Accessories



Honeycomb



Louvre

Product / Accessories

Colour 10

Colours 10

Cobra Infinito

2F76

2F74

* Please refer to the user manuals for further details.