

PHOS
ENGINEERING LIGHT

PANO MINI EYELID
STANDARD

PANO MINI EYELID - STANDARD

The Pano Mini Eyelid is a recessed, fixed uplight or wall light with a $\varnothing 44\text{mm}$ minimalist bezel and features a beautifully sculpted small eyelid glare shield.

PRODUCT FEATURES

Uplight / Wall Light

Fixed

Interior / Exterior

LED

IP67

Available in all Phos finishes

Interchangeable optics & accessories (pre & post install)

PHOS STANDARDS

60min fire-certified

Acoustic-rated

UK designed, manufactured and assembled

5 year warranty

OPTICS

Standard beam angles:
Eyelid

PHYSICAL PROPERTIES

Diameter $\varnothing 40\text{mm}$

Height 48mm

Cut-out $\varnothing 38\text{mm}$

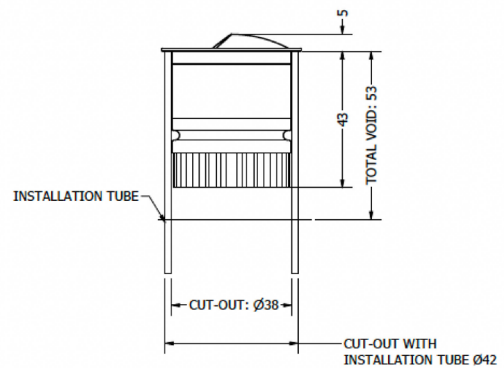
DRIVER INFORMATION

[Driver Configurator \(Link\)](#)

PRODUCT VIEW



DIMENSIONS



TECHNICAL SPECIFICATIONS

| CCT | 2700K | |
|---------------------------|--------|------|
| Wattage | 1W | 3W |
| Beam Angles | Eyelid | |
| Luminaire Lumens (lm) | 56 | 130 |
| Circuit Watts (c/W) | 2.6 | 5.6 |
| Luminaire Efficacy (l/cW) | 21 | 23 |
| Luminance (Cd) | 230 | 557 |
| Forward Voltage (Vf) | 2.78 | 2.97 |
| Current (mA) | 350 | 1050 |

| CCT | 3000K | |
|---------------------------|--------|------|
| Wattage | 1W | 3W |
| Beam Angles | Eyelid | |
| Luminaire Lumens (lm) | 63 | 157 |
| Circuit Watts (c/W) | 2.6 | 5.5 |
| Luminaire Efficacy (l/cW) | 24 | 28 |
| Luminance (Cd) | 251 | 643 |
| Forward Voltage (Vf) | 2.78 | 2.97 |
| Current (mA) | 350 | 1050 |

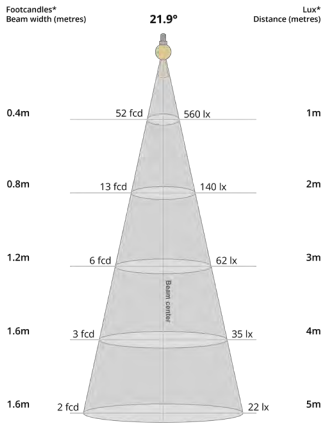
| | |
|-------------------|-------------------|
| Binning | 2 step MacAdams |
| CRI | 90+ |
| TM-30-15 | Rg 96.87 Rf 91.58 |
| Lumen Maintenance | LM80 |
| Lifetime | 50,000 hours |

| | |
|-----------------------|--|
| Dimming Options | Mains dim / Non-dim / 0-10V / DALI (dim to dark 0.01%) / Casambi |
| Flicker Index | 0 |
| SVM: (Visual Flicker) | 0.02 |

| | |
|------------------------------|---|
| Driver distance from fitting | Up to 10m (AWG 20)* |
| Wiring Type | Series |
| Accessories | Remote emergency (Maintained / Self Test) |

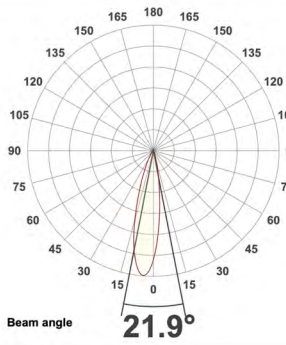
*If driver distance from fitting is +10m see driver configurator document for guidance

LIGHT CONES



Eyelid

POLAR CURVES



Eyelid

PARTCODE BUILDER

Example Code: MI-PE-WT-STD3-30-90-20-350

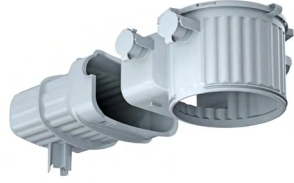
| Variant | Family | Bezel Finish | Engine | Power | CCT | CRI | Beam Angle | Driver Current |
|-------------------|--------------------------|-----------------------------|------------------------|-------------------|--------------------|-----------|------------|----------------|
| MI Mini | PE Pano Eyelid | WT White Textured | STD Standard | 1 Watts | 27 2700K | 90 | 20 | 350 |
| | | B1 Anodised Black | | 3 Watts | 30 3000K | | | |
| | | *C Custom | | | | | | |

*Codes for custom finishes can be found on the page 6.

ACCESSORIES



Pano Mini Installation Tube
ACC-P4-TUBE



Pano Install Concrete Box
ACC-HALOX100-190+FRONT

FINISHES

Every element of your light can be finished in any of the options below:

PLATED (Interior ONLY)



Antique Bronze
01



Antique Brass
02



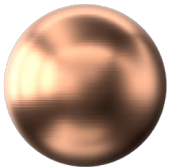
Polished Chrome
03



Satin Nickel
04



Polished Copper
05



Satin Copper
06

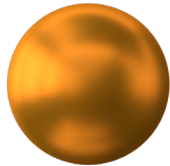


Polished Brass
09

ANODISED (Interior ONLY, except Orba Exteriors)



Tuba Brass
11



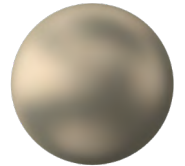
Antique Gold
12



Espresso Bronze
13



Cocoa Bronze
14



Ice Gold
15



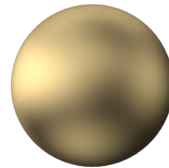
Mocha Bronze
16



Taupe Bronze
17



24K Gold
18



Champagne Gold
19



Anodised Black (9005)
B1

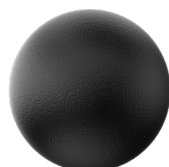
POWDER COAT (Interior & Exterior)



Pure White (9010)
W1



Textured White (9010)
WT



Textured Black (9005)
BT



RAL Classic
www.phos.co.uk/finishes



RAL Design
price on application