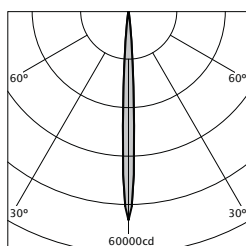
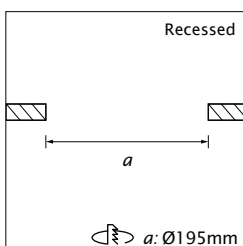
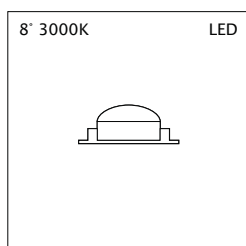


#### Order Code:

- White [RAL 9010] **71010**
- Black [RAL 9005] **71011**
- ◐ Custom Finishes Available on Request

#### Optional Extras (specify when ordering):

- DMX** DMX Control Conversion **11711**
- DALI** DALI Dimming Conversion **11722**
- ∞** Enable Scenes Control **11733**
- EXTERNAL** Ext. Dimmer Conversion **11755**



20W 8°	3000K LED
1m 0.14m	51000 lx
2m 0.28m	12750 lx
3m 0.42m	5667 lx
4m 0.56m	3188 lx
5m 0.70m	2040 lx

#### Construction

Stainless steel, die-cast aluminium and polymer fixture, powder coated; Mild steel mounting ring, powder coated

#### Mounting

#### Lamp Type

#### LED Lamp Power

#### Beam Width

#### Colour Temperature

#### Chip Luminous Flux (min)

#### Absolute Output

#### Light Output Ratio

#### Colour Rendering Index

#### LED Input

#### Diode Type

#### Max. Ambient Temperature

#### Voltage

#### Control Gear

#### Dimming Options

Recessed<sup>1</sup>

LED

20W

8°

3,000K<sup>2</sup>

1130.67lm

1164lm

1.0<sup>3</sup>

90+

700mA

Cree XP-E2

40°C

220-240V; 50/60Hz

External LED driver

1. Internal dimmer 0-100% (as standard)

2. External dimmer (trailing edge); specify when ordering<sup>4</sup>

Interior use only

(w)500 x (l)500 x (h)250mm

35mm

Ø195mm

+/- 175° Pan; +/- 35° Tilt

White RAL 9010, Black RAL 9005

2.96kg (including LED head)

Optional extra; specify when ordering

1. Handheld remote (ref: 11400)

2. DMX

3. DALI (dimming only)

DMX or DALI requires setup (with additional costs) and must be specified when ordering.

#### Place of Use

#### Min. Ceiling Clearance

#### Max. Ceiling Thickness

#### Ceiling Cutout

#### Movement

#### Weight

#### Scene Control

#### Control Options

#### Notes

- Luminaire is fixed in place using mounting ring.
- 3000K as standard. Other colour temperatures available on request.
- Due to LED flux binning, the Light Output Ratio is calculated on minimum luminous flux data. In actuality, chips place tend to have a higher flux level.
- If external dimming is specified, product cannot be dimmed internally. When external dimmer is used, the lamp dims normally, motors operate down to 50% dimming.