

O Z O N E

Ozone

66 rue Notre Dame de Nazareth
75003 Paris

TECHNICAL DATA : Joseph Dirand Diamant

(please see conditions below)

Done on-line on March 27 2017



DESCRIPTION : Wall Spotlight. Aluminium cubic structure, finishes are satin white.

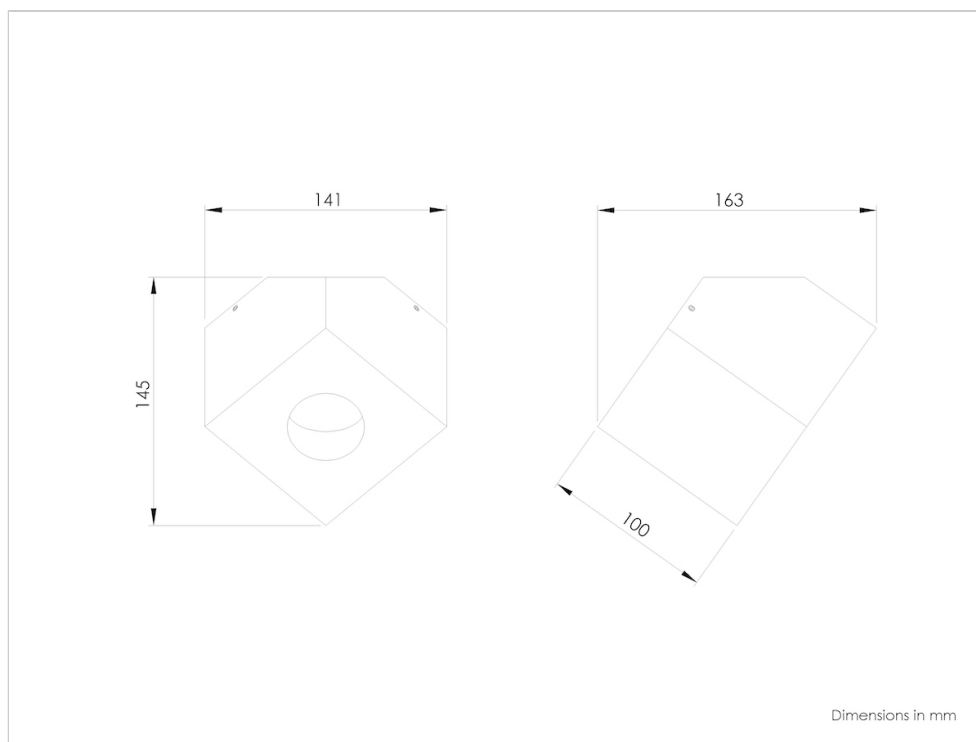
Warm white LED sources, 12W, 1000Lumens.

Converter 500mA outside the lamp, to be placed in a distant box, not included.

Weight: 2,5kg.

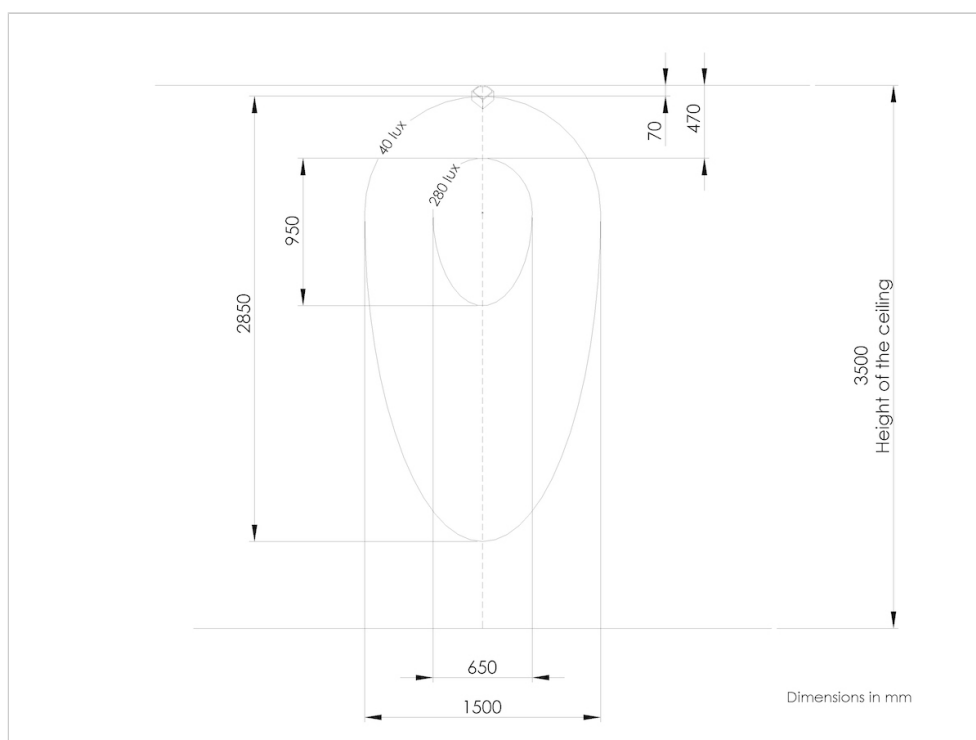
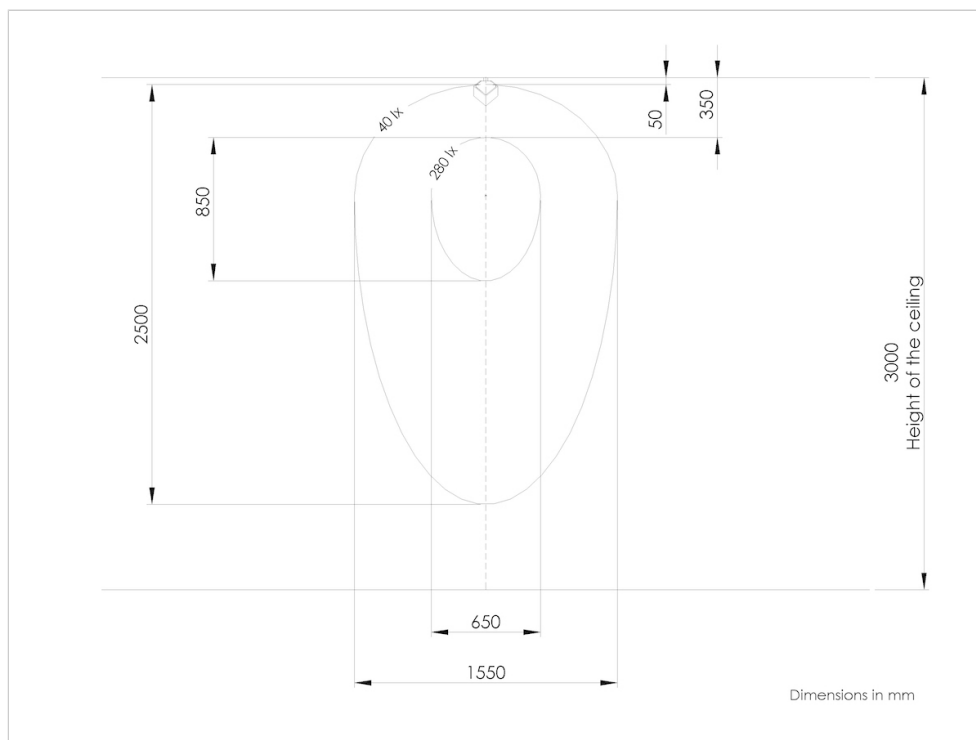
Size: 14x14x16cm.

Compliance: CE Class III.



FUNCTION : The lighting provides a projected light in a direction of 55° and with an angle of 40° . To enlighten the right place on the the wall, the spot light should be well placed in the ceiling. The Sources are equipped with honeycomb to prevent dazzling. The light output is 1000Lumens equivalent to a 70W halogen spotlight .

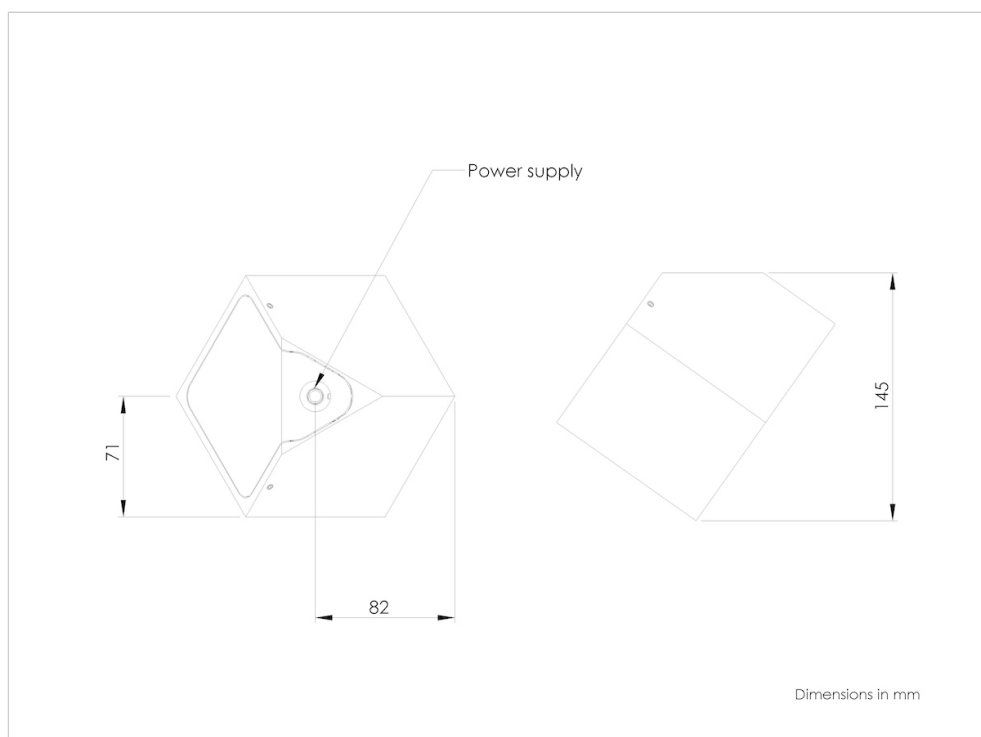
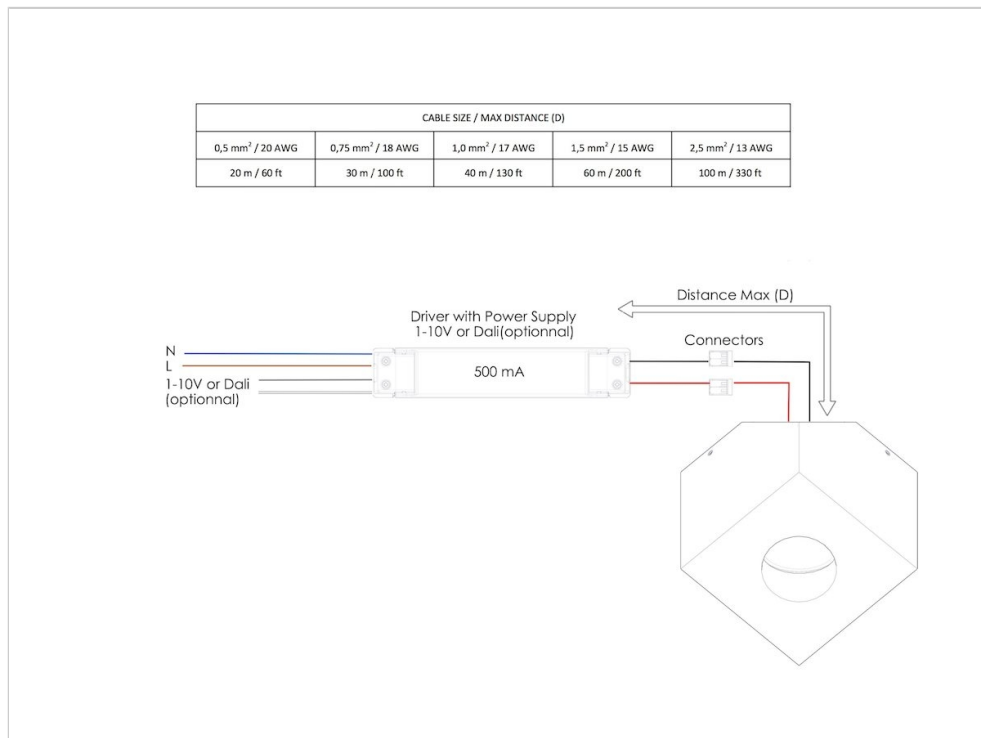
Light is produced by XICATO brand LEDs 2700°K, with a CRI=98 and a yield of 90lm / W. Energy performance: A +.

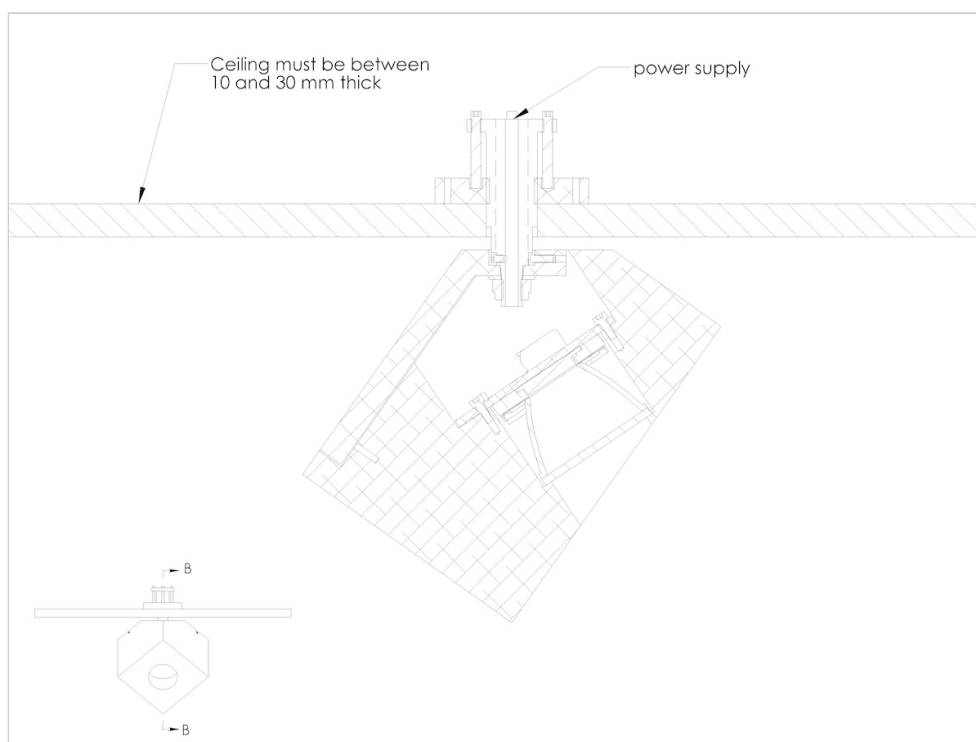
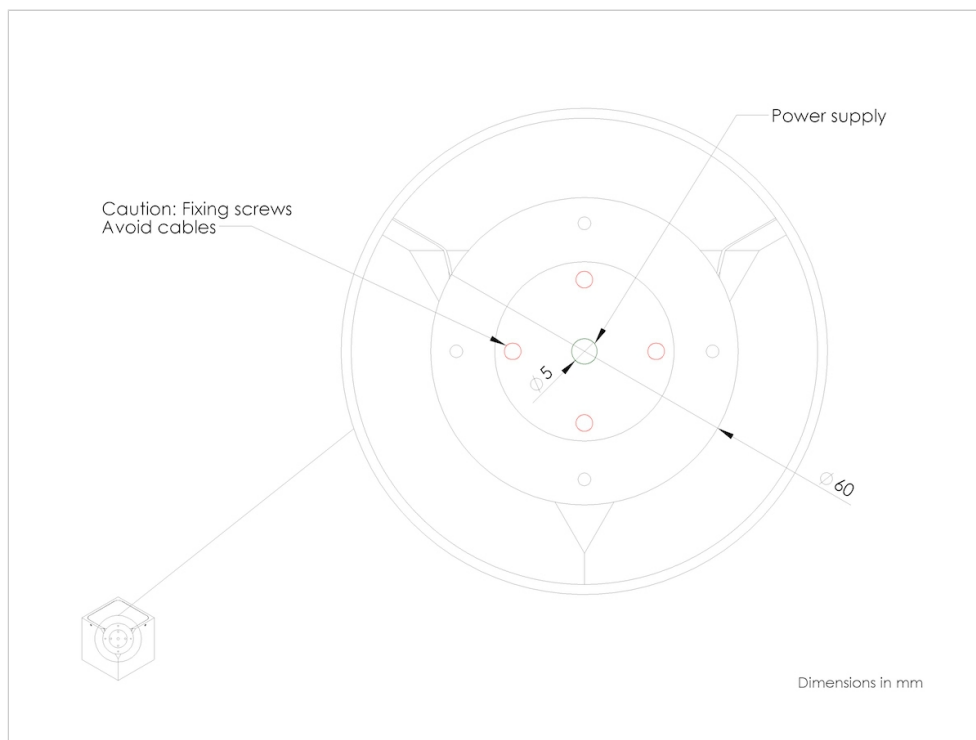


ELECTRICAL CONNECTION : Before connecting the fixture to the grid make sure it is not powered. Use the connector provided on the lighting. The lighting consumes 12W, is supplied without 500mA power supply and is designed to receive a remote power supply 500mA. We recommend the use of power supplies ELDOLED SOLOdrive 361/A witch allows optimal 0-10V and 0 to 100% dimming. This power supply allows installation in series (see wiring diagram) of two spots . It must be placed in an accessible and ventilated place. 4
Make sure the cable length between power supply and light and their section

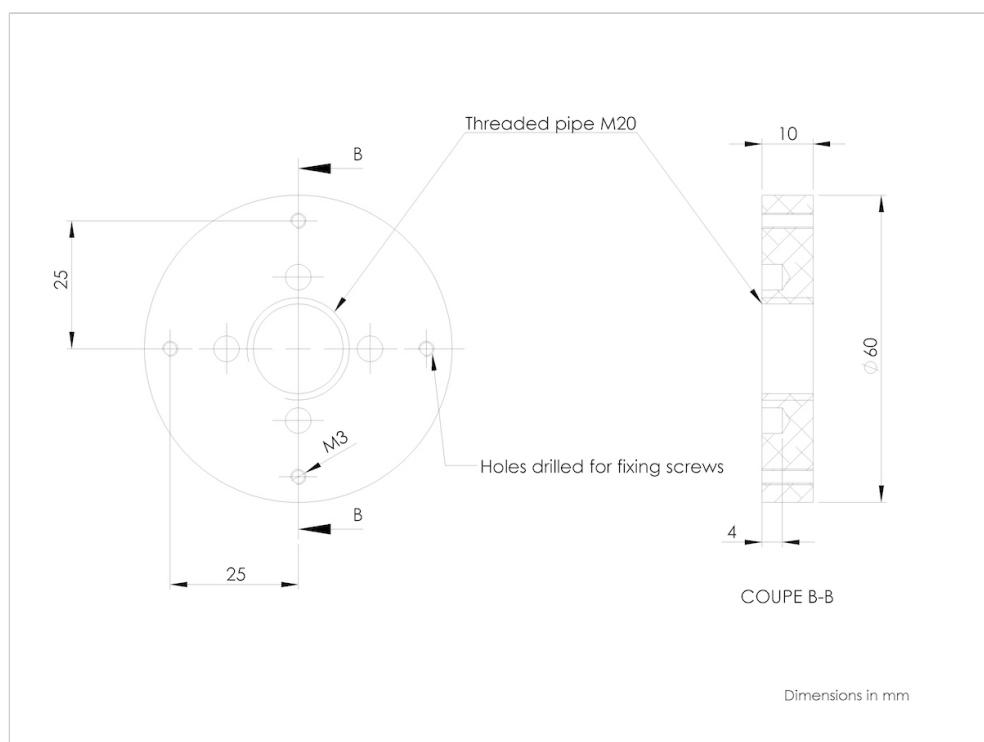
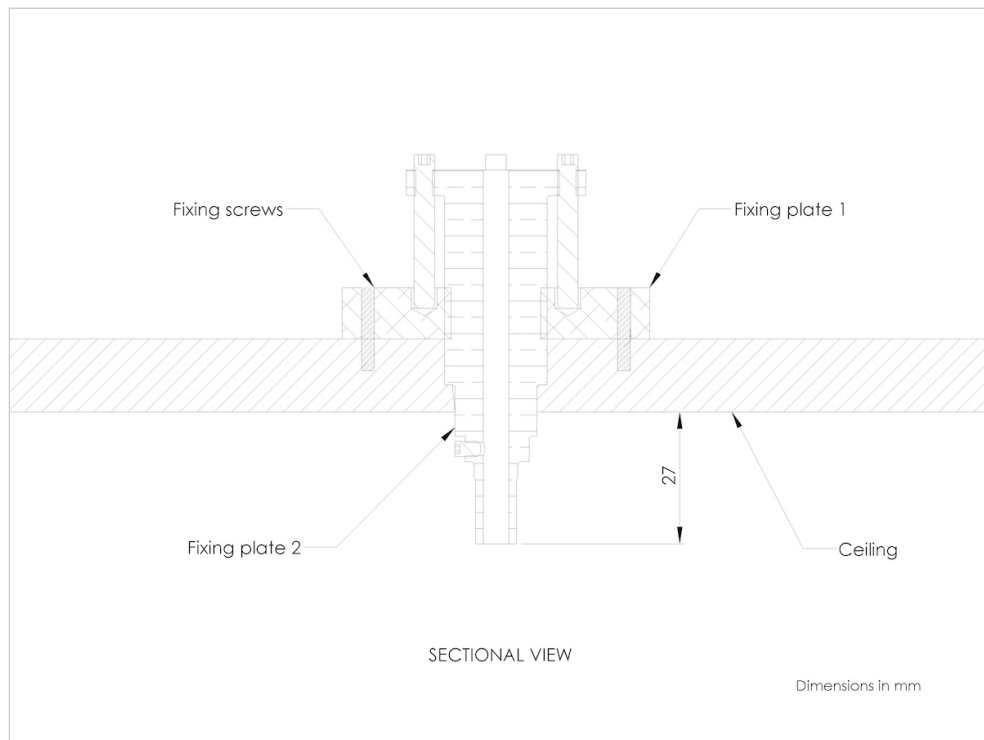
apply to the attached diagram.

The output of the cables must be flat and the exit hole must not exceed 20mm.
The cables must not cross the screws of the plate.

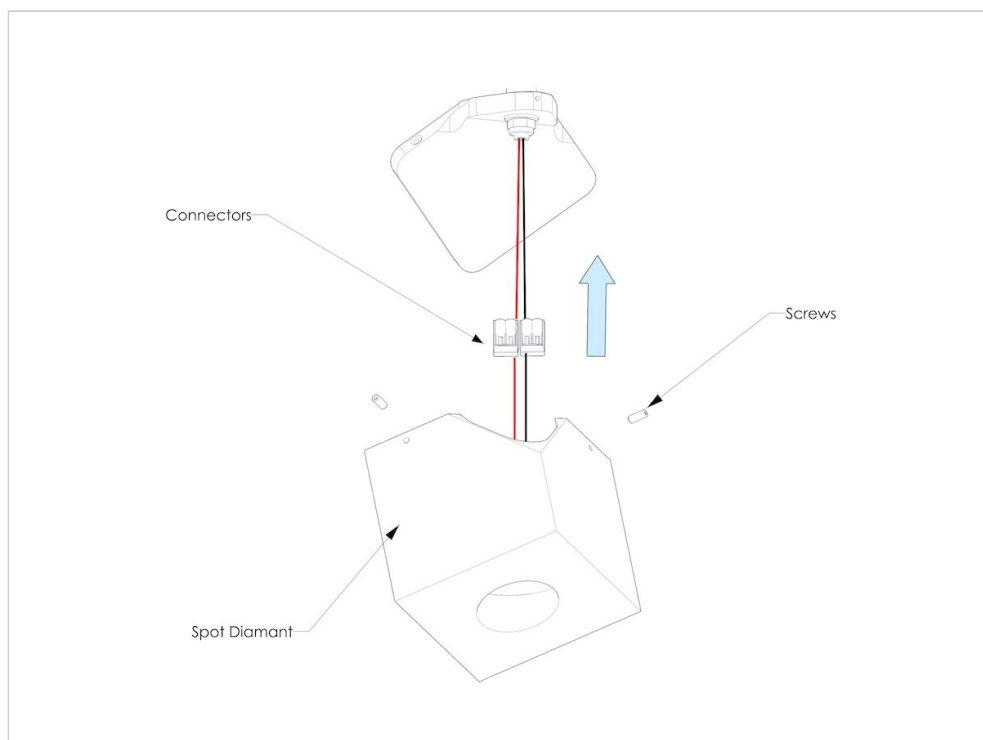
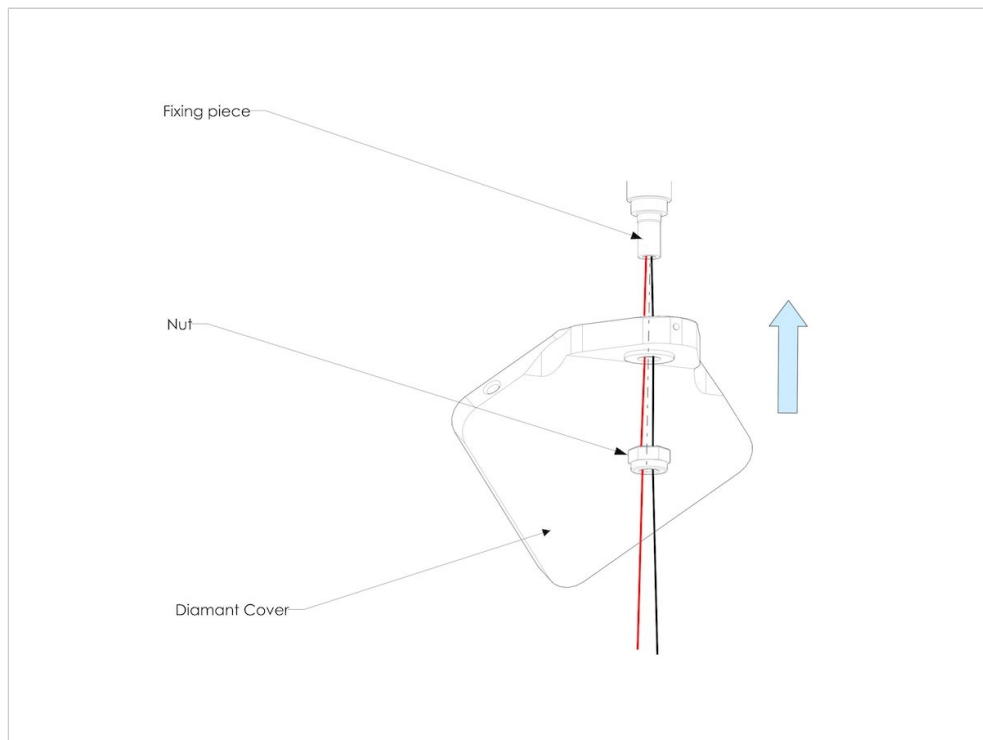




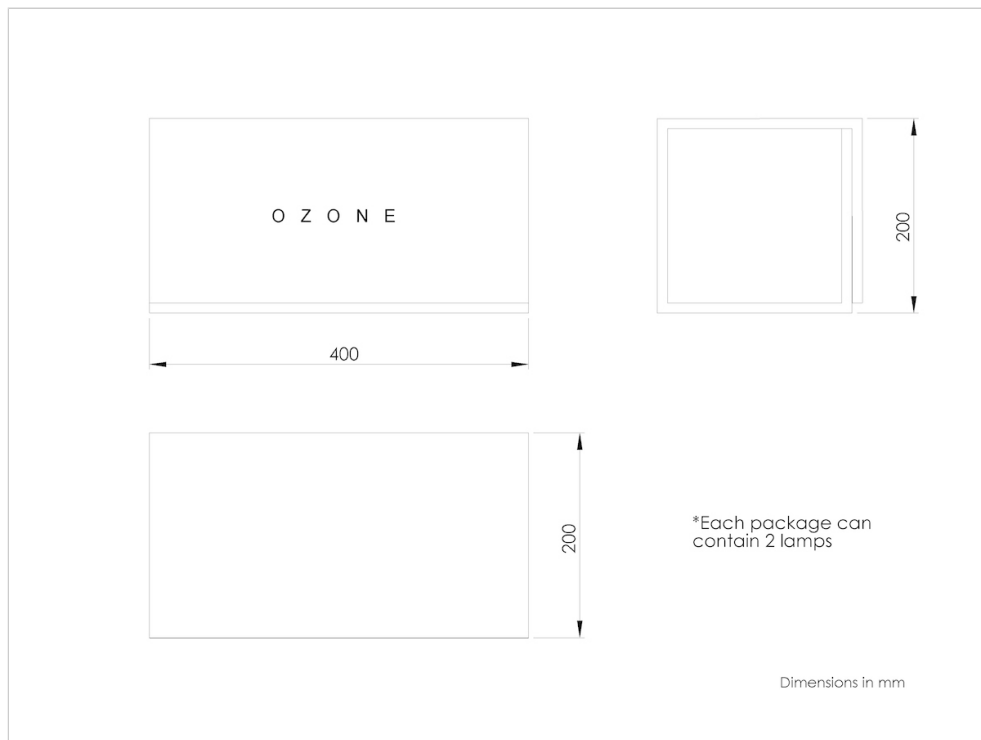
MECANICAL FASTENING : To determine the position of the spots refer to the light patterns. The fixing of the plate needs a special preparation off the ceiling and is realized with screws, see map. Use the appropriate method according to the materials on which it will bind. Lamp Weight: 2,5kg. Drill avoiding electrical cables.



MOUNTING : Mount head to the plate using the screws provided following the attached plan.



PACKAGING : The lamp is protected by a cardboard, wood and polyurethane foam packaging. They are 2 lightings in one packaging.
Weight 2 lights included: 8kg.
Dimensions: 40x20x20cm.



MAINTENANCE : The cleaning is done with a white soft damp cloth. For some traces locally you can use a soft cloth with glass cleaner . Be careful not to touch the LED to avoid damaging them.

