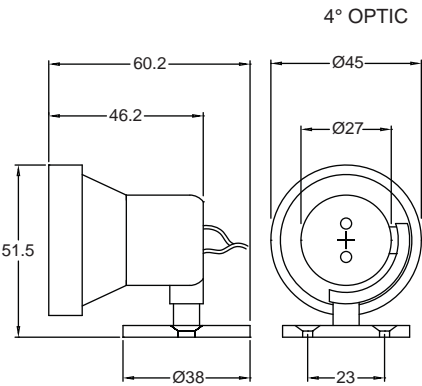
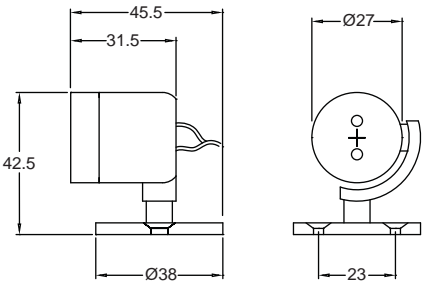


LED O



CARCLO OPTICS



| | |
|------------|-----------------------------|
| Order Code | LED-O.Optic.Col Temp.Finish |
| Example | LED-O.4°.6500K.Brushed |

- Materials: Aluminium
- Lamp: MSL Star (1 x Cree XPE)
- Finish: Anodised or painted any RAL colour
- Dimming: 1-10V, DMX or DALI
- Driver: Remote driver required.
Allow 2.3W at 700mA, 1.1W at 350mA
- Locking: 3mm allen key required
- Available Tilt: ± 90°
- Weight: 0.08kg
- Description: Minature surface mounted spot with interchangeable optics
- Accessories: Ø20 (8.2°, 10.35°, 17.9°, 31.5°) or Ø35mm (4°) optics

Please note all output figures are based on output from bare LED strips/arrays and for indicative purposes only, output will vary when in fittings and as a function of the LED colour and running temperature

LED Information

Each LED “lamp” consists of one or more CREE XPE power LED thermally bonded to an aluminium cored printed circuit board. Colour temperatures of 2800K, 3000K, 3500K, 5000K and 6500K can be specified as can Amber, Red, Green or Blue.



MSL Star
Ø21mm PCB with a single LED

For driver information see LED driver spec sheet.