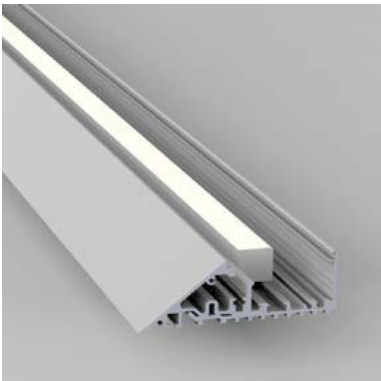


Project Title: \_\_\_\_\_

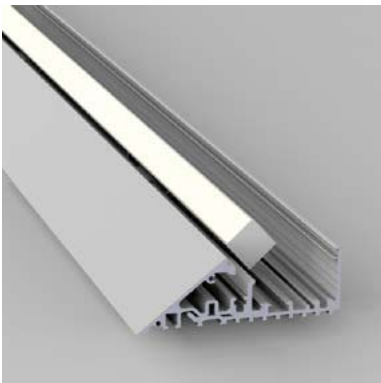
Luminaire Ref: \_\_\_\_\_

 Press to send

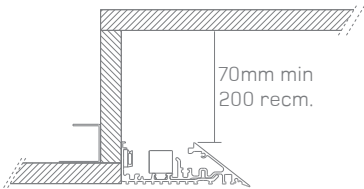
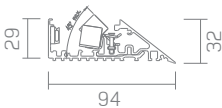
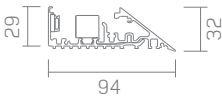
Send form to whitegoods



fixed



adjustable



Specifier Details



Product Codes & Description (Ordering information)						
Frame	Led module	Lumens lm/m	Length (mm)	Dimming	Voltage	Emergency
PMEC plaster-in	CV-827* CV-830* CV-840	1117* 20.0W per meter opal diffuser	Specify length	ND* non-dim	220-240V standard	EMND non-dim
PMECIP44 plaster-in IP44	85 CRI	1464* 20.0W per meter clear diffuser		0-10V 0-10 Volt dim	120-277V universal	EMST self-test
PMEC-ADJ plaster-in	CC-827 CC-830* CC-840	1958 21.0W per meter opal diffuser		1-10V 1-10 Volt dim		EMDA DALI
	80 CRI	2566 21.0W per meter clear diffuser		DALI DALI protocol		

\* Items available for Quickship

Product Description

A miniature continuous plaster-in edgless cove with minimal visual impact. In the adjustable option the LED can be tilted 45° forward. Can be specified to any desired length.

Finish

Standard product finish is white powder coated RAL 9010 with 30% gloss.

Example LED module code

CV-830-1117  
CV = Whitegoods Constant Voltage LED  
830 = 85+ CRI, 3000K colour temperature  
1117 = 1117 lumens per meter delivered

Examples of typical output options

Module: CV-827 / 830 / 835/ 840  
1117 lm/m running at 20.0W/m (56lm/w)  
Opal diffuser 110° beam angle

Module: CV-827 / 830 / 835/ 840  
1464 lm/m running at 20.0W/m (73lm/w)  
Clear diffuser 97° beam angle

Module: CC-827 / 830 / 835/ 840  
1958 lm/m running at 21.0W/m (93lm/w)  
Opal diffuser 110° beam angle

Module: CC-827 / 830 / 835/ 840  
2566 lm/m running at 21.0W/m (122lm/w)  
Clear diffuser 97° beam angle

Data shown is delivered lumens (3000K)

Dimming

- ND: non-dimming
- 0-10V: 0-10 Volt dimming, min 0.1%
- 1-10V: 1-10 Volt dimming, min 0.1%
- DALI: DALI protocol, min 0.1%

All drivers are suitable for remote mounting up to 10 meters from fixture. Longer distances are available on request.

Emergency

EMND: emergency non-dimmable  
EMST: emergency self-test  
EMDA: emergency DALI protocol

Accessories

Dust cover (available for PMEC and PMECIP44 only)

Note

- Indicative LED information shown. Refer to photometry data for LM79-08 results.
- All LED boards available in 2700, 3000, 3500 and 4000 Kelvin.
- Luminaires rated at 40°C maximum ambient temperature.
- LED boards in increments of:  
constant voltage = 25mm  
constant current = 100mm
- Max product length from a single driver:  
constant voltage = 4.8 meters  
constant current = 1.5 meters
- Available as IP 44 for continuous length (suitable for uplight application with dust cover accessory only).

Please contact Whitegoods for further LED specifications.